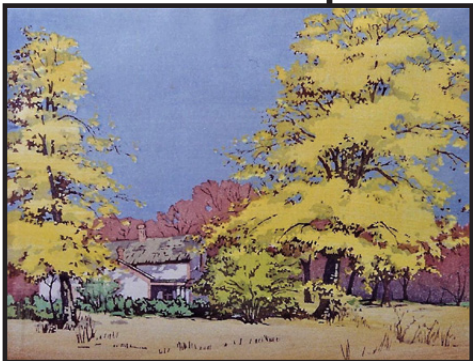


COLORING OPTIONS:

1- Add color to the image to look like the original artwork below.

2- Do think this is a fall image? Spring? Use the colors that make you think of that season.

3- Use whatever colors you want! A blue tree, a pink sky, go for it!



Norma Bassett Hall (1889 - 1957). *My Neighbor's House*
Color woodcut on paper, circa 1930s. Gift of Esther Strickland. [1998.5]