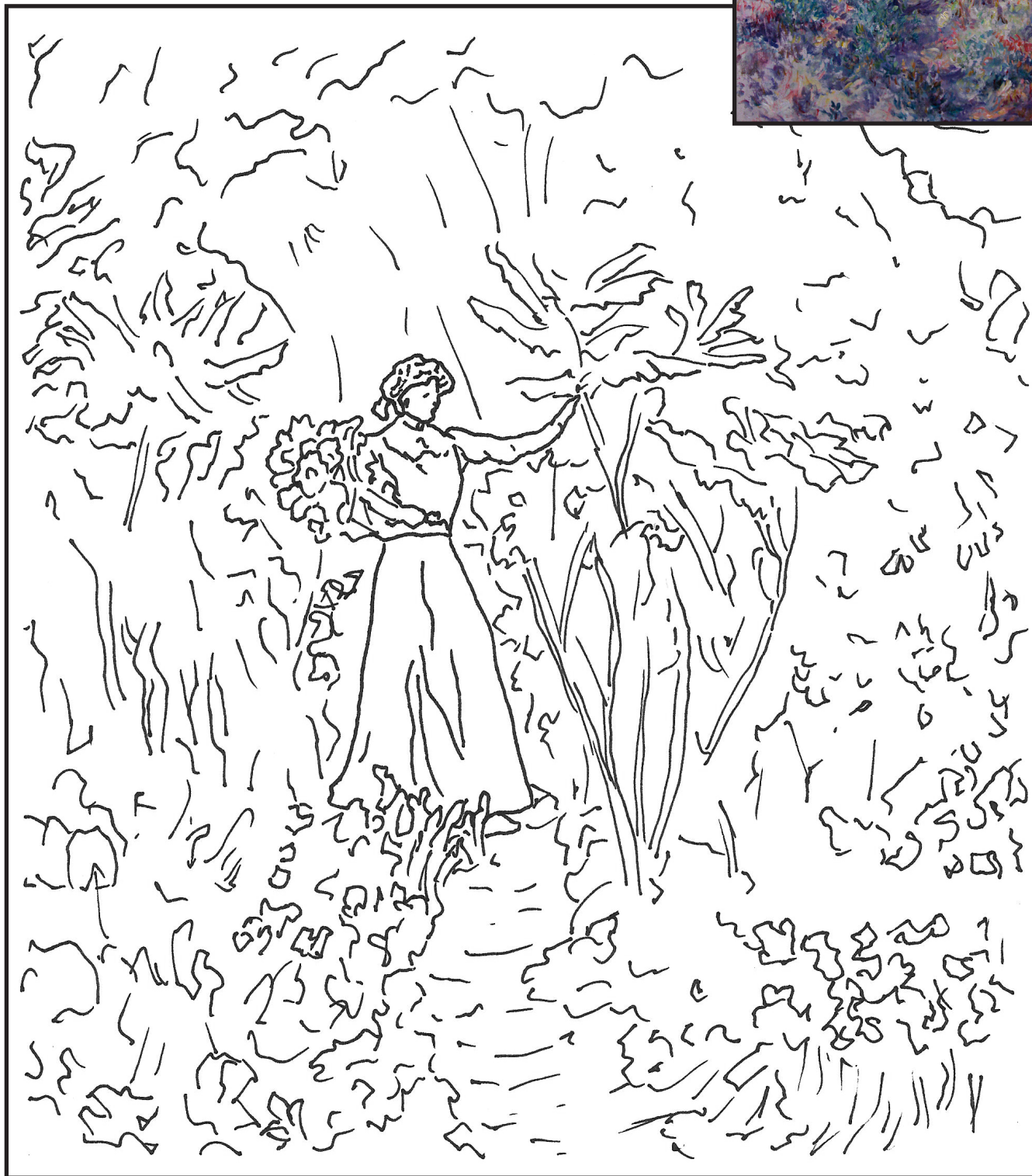
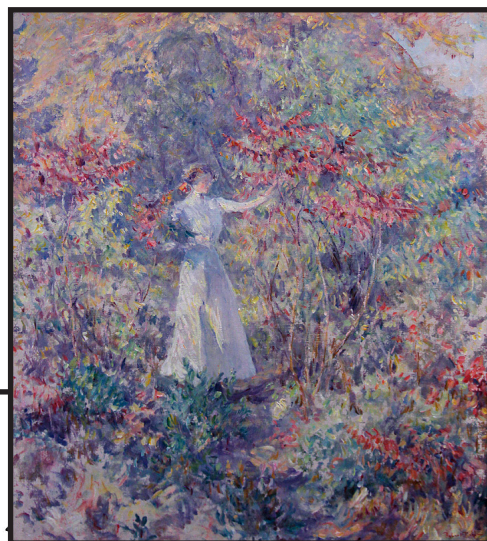


COLORING OPTIONS

#1 - Color the image however you like!

#2 - Try using a larger medium like crayons or thick markers and overlay colors like the artist to make it look like brush strokes.



Robert Reid (1862 – 1929). *The Last Leaves of the Season*. Oil on canvas, circa 1915.
Museum Purchase using Funds from the Robert and Lois Bergland Acquisitions Fund. [2013.1]